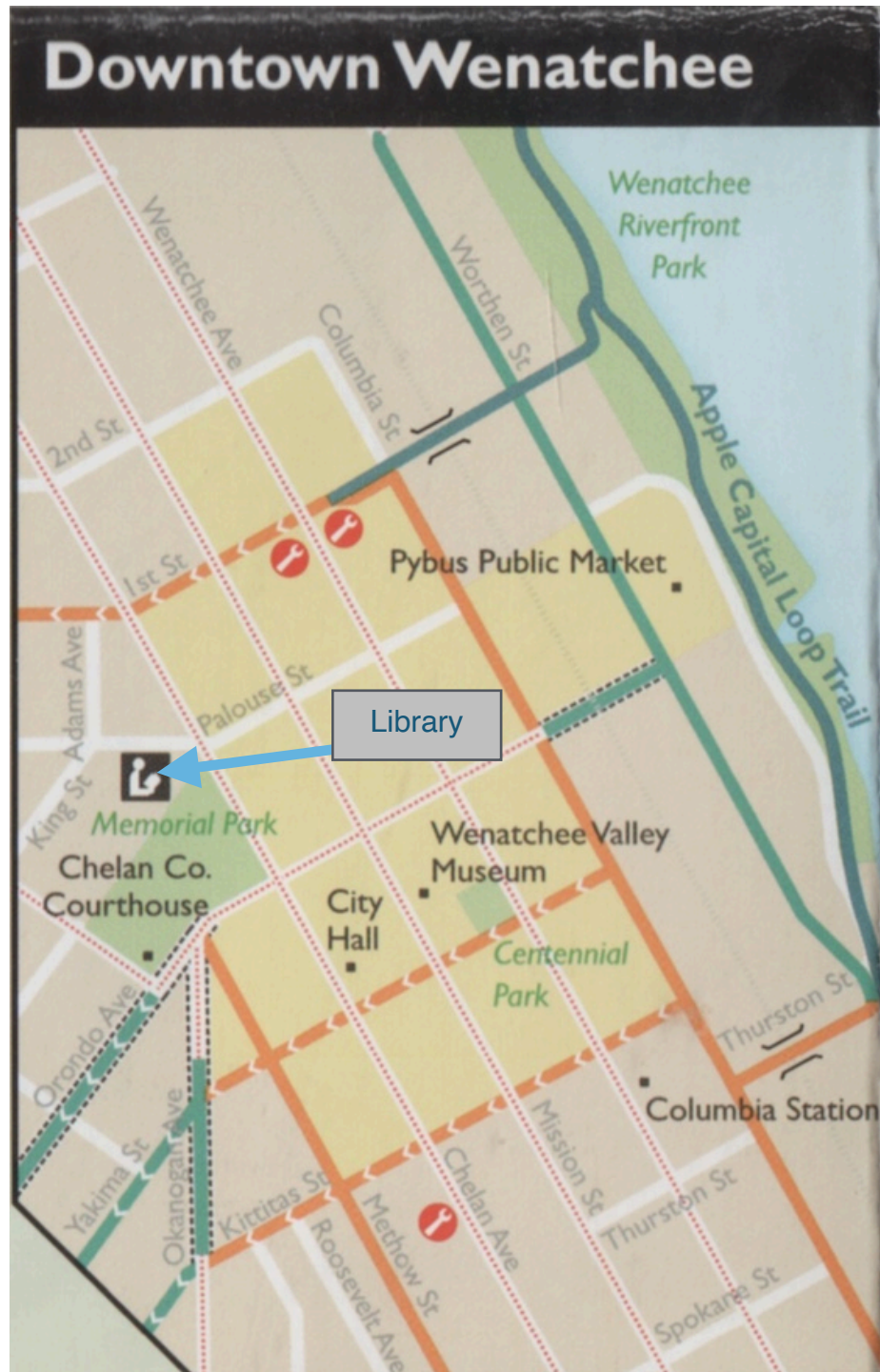


# Bicycle Routes to Wenatchee Branch - North Central Regional Libraries

by Charles Hickenbottom

The Wenatchee Branch of North Central Regional Libraries (NCRL) is centrally located adjacent to Memorial Park in downtown Wenatchee (below). There are convenient possibilities to bicycle there from any direction. High quality bicycle racks are near the front door. Books, the most common item to take home from the library, are easily transported by bicycle.





The image (above) shows the bike racks in front of the library. In the background is the best route approaching the library from the Loop Trail. The map (below, red lines) shows the most comfortable route to reach the library from the Riverwalk Crossing. Bicycle over Riverwalk Crossing, then use the contraflow bike lane to reach Wenatchee Ave. Continue west on First St, using the protected bike lane. At the alley midway between Mission St and Chelan Ave, bicycle south using the alley to reach Palouse St. Go west on Palouse St to reach Chelan Ave. At the controlled crossing of Chelan Ave, yield to approaching traffic on Palouse St, taking a slight left turn onto Douglas St, the driveway leading towards the library. Use caution riding alleys and take it slow. Broken glass is more common here than roads with more regular maintenance.

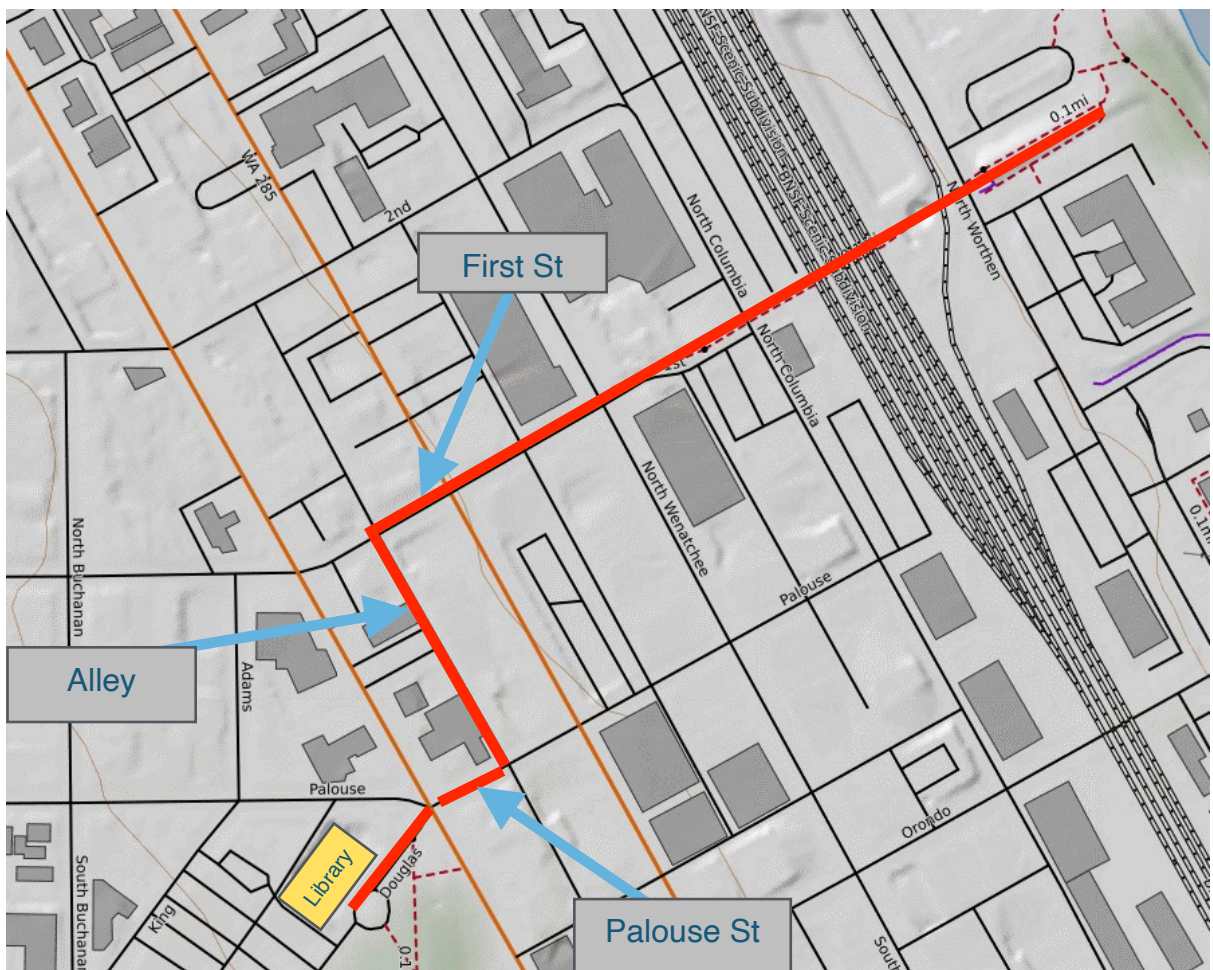




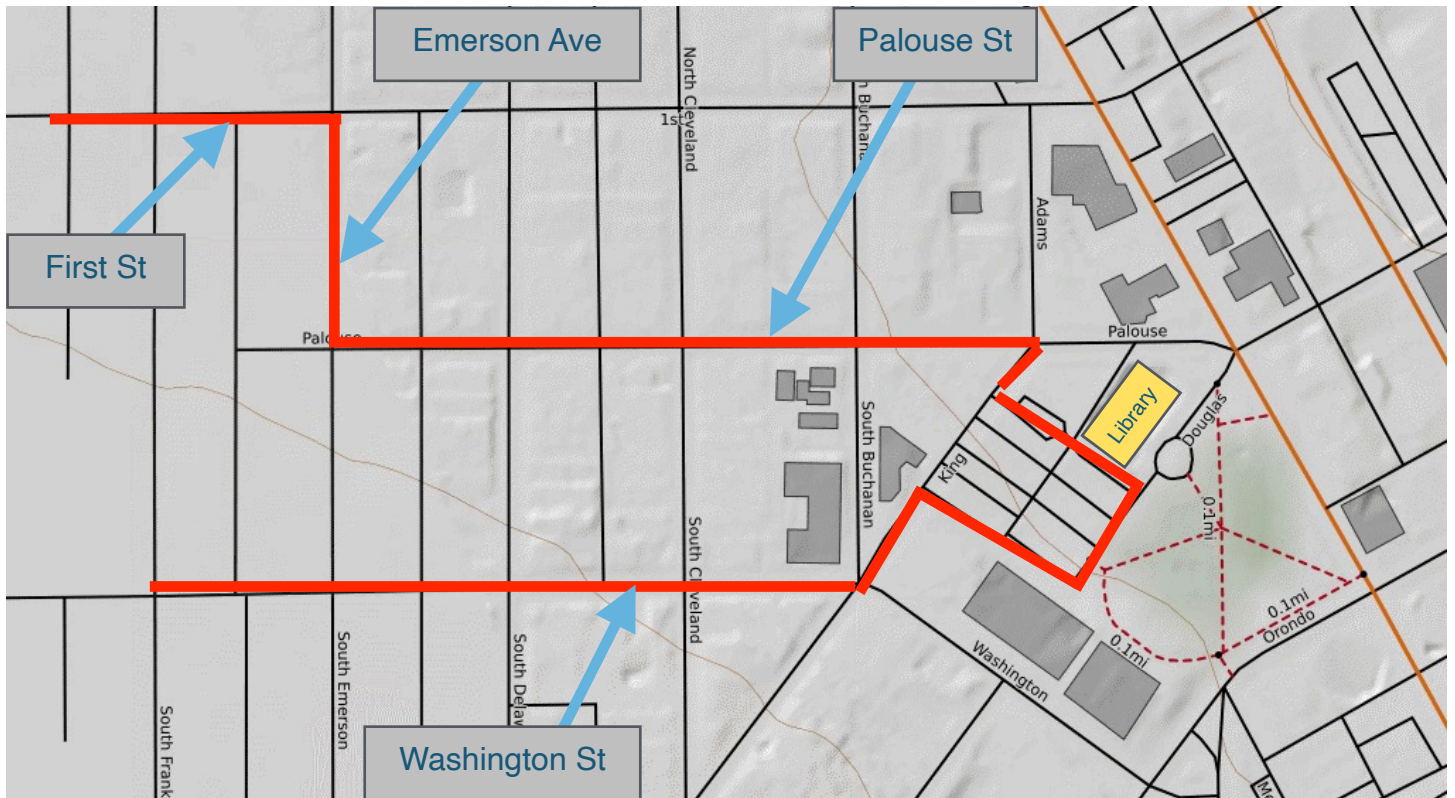


Image (left) showing the traffic circle in front of the library and the sidewalk leading towards Orondo Ave, Okanogan Ave, and Methow St. Map (below) shows the route through Memorial Park and three arterials that fan out into neighborhoods south of the library. Remember that Methow St between Yakima St and Orondo Ave is one-way northbound. Southbound bicyclists can use the sidewalk in that section to get through.





Map (below) shows routes towards the library from First St, Palouse St, and Washington St.

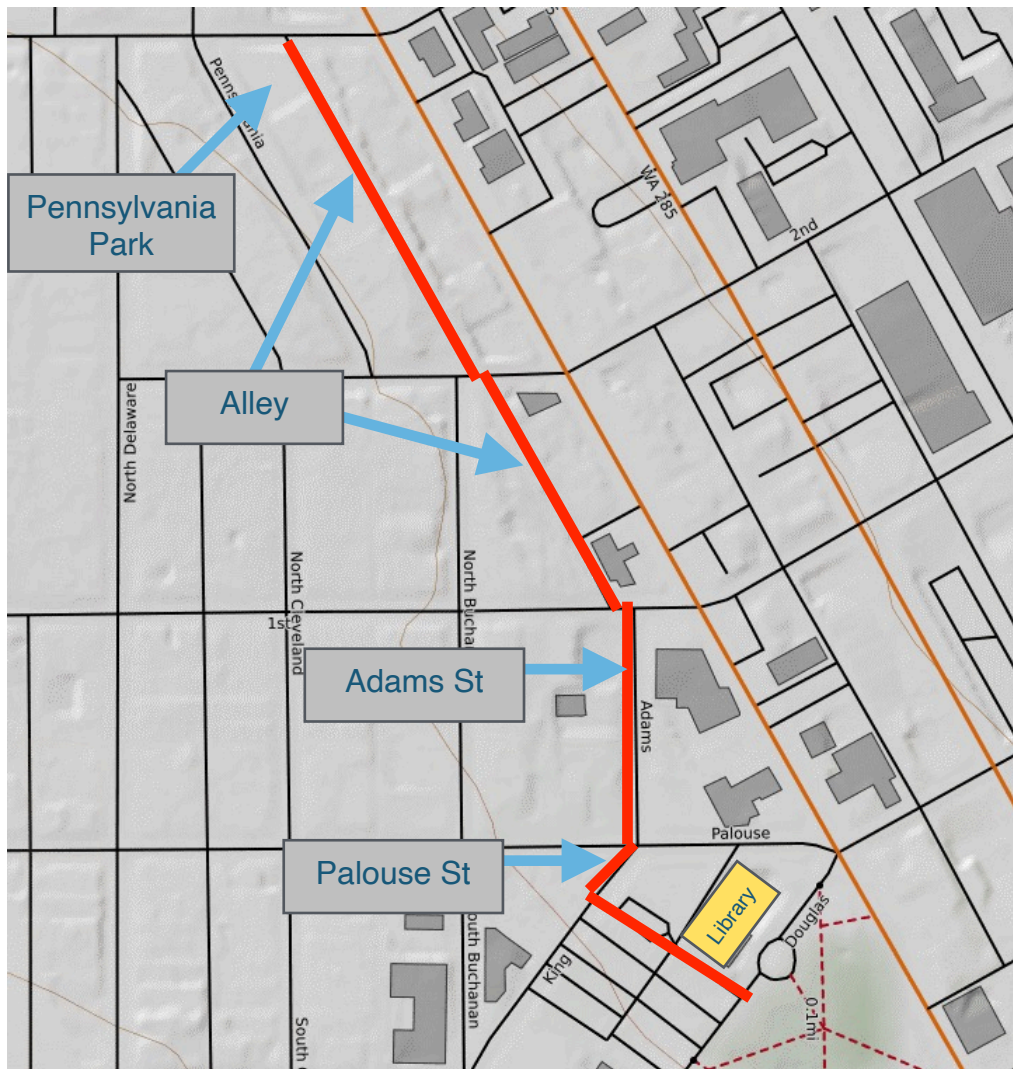


Map (below) shows a way towards the library from Castlerock St and Idaho St. King St is steep and bumpy, use caution.





Map (below) shows a route to the library coming from East Wenatchee using the Loop Trail, Thurston St underpass, S Columbia St, Yakima St, Methow Ave, and Memorial Park sidewalks.



For bicycle riders coming to the library from Pennsylvania Park, there is an easy route. Begin on Third St and head south on the paved alley that is just east of the park. At Second St continue south on the alley. Where the alley ends at First St, continue south on Adams St. At Palouse St, head up Palouse a few feet, then turn south into the parking lot which serves the library and courthouse.

All of the routes shown take the most bicycle friendly streets available. It's surprising easy to get to the library by bicycle. Even the smallest of backpacks work to take a book home. Bicycle trips to the library reinforce that it's practical to get to many other locations in Wenatchee by bicycle.

Originally prepared, April, 2023. Updated, July, 2023 and July 2024.



Charles Hickenbottom is the author of *Greater Wenatchee Bicycle Routes - A History Told Through Maps, Drawings, and Pictures*. The book is available for purchase through the Wenatchee Valley Museum, with all proceeds from sales donated to the museum. The book can be checked out from North Central Washington Libraries. Hickenbottom served for 25 years on local bicycle advisory boards and committees. For two decades he commuted by bicycle to Lewis & Clark Elementary School from his home near Chase Park. Most of his errands and travel around town are done by bicycle. Since the completion of the book in 2022, Hickenbottom has completed several writing projects about various bicycling topics pertinent to Wenatchee, hosted by the Wenatchee Outdoors website.